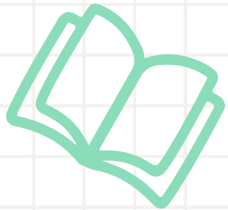




Academic Advising Begins SY25-26!



**How did they
become a
Veterinarian?**

**¿Cómo se
convirtieron en
veterinarios?**



Jobs/Education

- High School
 - 11th grade – 25 hours Trader Joe's
 - 12th grade – 35 hours Chipotle
- Graduated Standard Diploma
- Attended NOVA to save money and worked Full-Time at Starbucks
- After three years, transferred to James Madison University
- Graduated Bachelors in Psychology
- Worked Front Desk at Columbia Pike Animal Hospital
- Decided to become a Veterinarian
- Attended Virginia–Maryland College of Veterinary Medicine at Virginia Tech

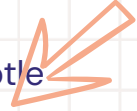


History



- High School: Chipotle (35hrs)
- Graduated Standard Diploma
- Attended NOVA/Worked Full-Time at Starbucks
- After three years, transferred to James Madison University
- Graduated Bachelors in Psychology
- Full-Time Front Desk at Columbia Pike Animal Hospital
- Graduated Virginia-Maryland College of Veterinary Medicine at Virginia Tech

Historia

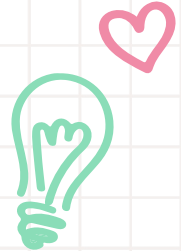


- Escuela secundaria: Chipotle (35hrs)
- Graduado Standard Diploma
- Asistió NOVA/Trabajó a tiempo completo en Starbucks
- Después de tres años, transferido a James Madison University
- Graduado Licenciatura en Psicología
- Full-Time Front Desk at Columbia Pike Animal Hospital
- Graduated Virginia-Maryland College of Veterinary Medicine at Virginia Tech



There are multiple pathways for each person and not one person follows the same pathway. It's okay to not know what you want to do, but let's try to find some options!

Existen múltiples caminos para cada persona y no todos siguen el mismo camino. Está bien no saber qué quieres hacer, ¡pero intentemos encontrar algunas opciones!




Career Key



- Holland's Theory states that **most** people (always exceptions!) fall into one of six categories:
 - Realistic
 - Investigative
 - Artistic
 - Social
 - Enterprising
 - Conventional


Career Key

- La teoría de Holland establece que la mayoría de las personas (¡siempre hay excepciones!) entran en una de seis categorías:
 - Realistic
 - Investigative
 - Artistic
 - Social
 - Enterprising
 - Conventional
- 

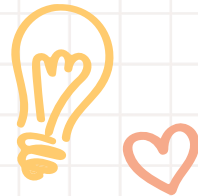
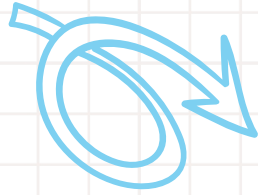
Career Key

- There are six work environments that are the same
- The thought is that if you know what your category and matching work environment category then it might help you determine the courses to take or the college majors to obtain or the type of jobs to apply for

Career Key

- Hay seis entornos de trabajo que son iguales
- La idea es que si usted sabe cuál es su categoría y la categoría de entorno de trabajo correspondiente, entonces podría ayudarle a determinar los cursos a tomar o las carreras universitarias a obtener o el tipo de trabajos a los que postularse. 

Naviance Student



Log into Schoology

Click on the "Waffle"

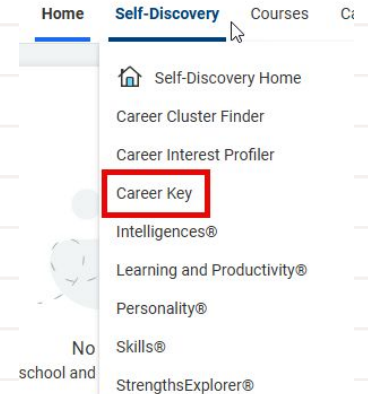
Click on "Naviance Student"



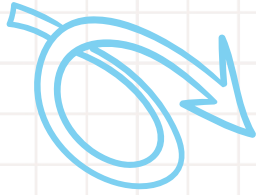
In "Naviance Student"

Click on "Self-Discovery"

Click on "Career Key"



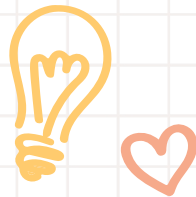
Naviance Student



To change Languages
Look at the Top Right Corner
Click on the "EN Globe"
Choose Language

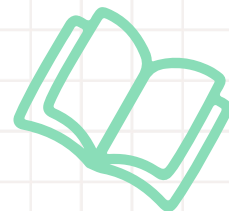


Click on "Start Assessment"



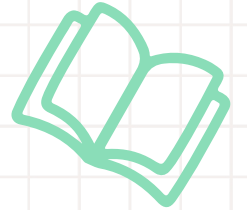
Course Fair - Tuesday, 12/10

- Students will have an opportunity to visit four sessions on different classes that will be offered at Justice next year
- Students need to report to Advisory to pick up the course list and room location of the presentation
- This weekend, the course list and room locations will be posted in Schoology -> Course -> Student Services -> Academic Advising
- This weekend, links will be posted to the Online and PDF Course Catalog, Course Selection Sheet PDF and Google Form



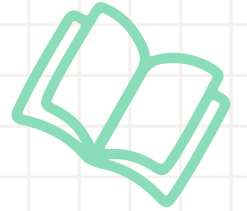
Course Fair - Tuesday, 12/10

- Los estudiantes pueden elegir cuatro sesiones para aprender más sobre las clases.
- ¡Los estudiantes se presentan primero al grupo de asesoramiento!
- Los estudiantes recogerán la lista de cursos y la ubicación de las habitaciones en Asesoría.
- Se publicarán más enlaces a Schoology -> Courses -> Student Services -> Academic Advising



Course Fair - Tuesday, 12/10

- Choose course presentation sessions wisely!
- Attend course presentations that YOU are interested in; not your best friend; not your significant other
- Once you pick a location, you must stay in that location for that session!
- Remember your results from the Career Key! What classes do we offer at Justice or at an Academy that fits your Key??



Course Fair - Tuesday, 12/10

- ¡Elija sabiamente las sesiones de presentación del curso!
- Asista a presentaciones de cursos que le interesen a USTED; no a las de su mejor amigo; no a las de su pareja.
- ¡Una vez que elijas una ubicación, debes permanecer en esa ubicación durante esa sesión!
- ¡Recuerda tus resultados de Career Key! ¿Qué clases ofrecemos en Justice o en una academia que se ajuste a tu Key?



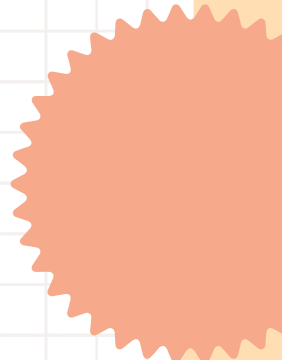
Teacher Presentations - 12/10 & 12/11

- Teachers will give a short presentation in classes about the next level course
- Teachers are the experts when it comes to their content and are wanting to make sure you have clear expectations of the next course
- If you aren't sure what next class to take, take a moment to ask your teacher their observations and suggestions
- You aren't choosing classes yet; you're just exploring the options!



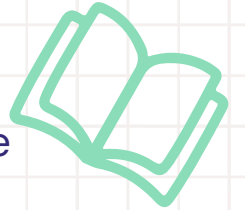
Teacher Presentations - 12/10 & 12/11

- Los profesores darán una breve presentación en clases sobre el curso del siguiente nivel.
- ¡Los profesores son los expertos cuando se trata de su contenido!
- Si no estás seguro de qué próxima clase tomar, tómate un momento para preguntarle a tu profesor sus observaciones y sugerencias.
- ¡Aún no estás eligiendo clases; sólo estás explorando las opciones!



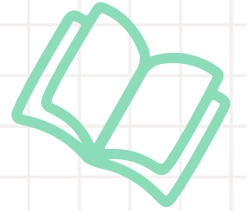
Academic Advising

- You will have an opportunity to choose classes using a Google Form (link to be provided)
- School Counselors will meet with you individually to discuss what you selected and other options
- **Timeline:**
 - Monday, Jan 13 – 11th Graders via English Class
 - Monday, Jan 27 – 10th Graders via HPE 10
 - Monday, Feb 10 – 9th Graders via HPE 9
 - Dates subject to change



Academic Advising

- Tendrás la oportunidad de elegir clases usando un formulario de Google (se proporcionará un enlace)
- Los consejeros escolares se reunirán con usted individualmente para discutir lo que seleccionó y otras opciones.
- **Cronología:**
 - Monday, Jan 13 – 11th Graders via English Class
 - Monday, Jan 27 – 10th Graders via HPE 10
 - Monday, Feb 10 – 9th Graders via HPE 9
 - Fechas sujetas a cambios





Thank you!